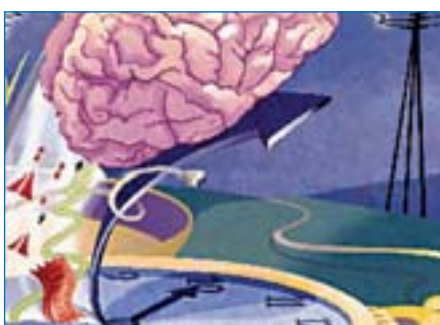




What's the molecular basis that makes gourmet food so special? A question now ripe for analysis by high throughput genomics. Part 1 about wine and cheese. (p. 26-31)



Johanna Meijer and her group in Leiden (NL) have revealed exceptions to an established theory in the pacemaking of biological rhythms. (p. 37)



Every year, 300 million hens' eggs are used to produce the seasonal flu vaccine. In the case of a swine flu pandemic, however, this will be far too few. (p. 46)



The last decade of microscopy development has seen a huge progress. In our product survey, *Lab Times* readers get a widespread insight into newest technologies. (p. 57)

News

Author identification numbers / Doubtful funding policy / Recently awarded / Fake journals / Chromatin lenses _____ 6-10

Opinion

Research letter from ... Turkey: *Beware of Medics Bearing Mobile Phones* _____ 12
Observations of The Owl (17): *Goodbye, Genes!* _____ 14

Analysis

Animal research

The difficult revision of the EU directive on animal experiments _____ 16

Synthetic biology

Two experts from science and industry talk about synthetic biology: concepts, status quo and visions, as well as dangers and risks _____ 20

Gourmet Genomics (1)

High throughput biology is reaching the organisms essential to the production of gourmet food. Part 1 summarises the efforts on cheese and wine _____ 26

Career strategies for young European scientists (XVI)

Doing a PhD in Finland _____ 42

Journal Club

Leiden/Netherlands Pacemaking in biological rhythms _____ 32

Vienna/Austria Notch signalling in *Drosophila* _____ 34

Bratislava/Slovakia Peptide hormones in insects _____ 36

Publication Statistics

Parasitology research in Europe _____ 38
Don't be misled by citation figures! (16): *Self-Citations Stink ... but Rarely* _____ 41

Biobusiness

News

Most European biotech not worth mentioning for US publishing house / Nycomed perplexes pharmaceutical world / Sanofi-Aventis to strengthen biologics _____ 44

Focus on flu vaccine development

Swine flu spurs vaccine makers: *Turbo-Serum under way* _____ 46

The seasonal flu vaccine and its serotypes _____ 47

Profiting from flu: a lot of companies cash in on disasters _____ 48

Close-up: The Jellyfish's Shiny Interior

Aequotech of medieval Ferrara, Italy, is developing molecularly-engineered sensors _____ 50

More news

Protaffin pockets €14 million for anti-inflammatory drugs / Biotech report sees ray of hope _____ 53

Service

Methods

Bench philosophy (18): on badly and well-kept laboratory notebooks _____ 54

Tips and tricks of the trade: Bradford assay reloaded _____ 56

Product survey: Microscopes _____ 57

New products _____ 62

Book review

Nobels, photographed by Peter Badge _____ 63

Calendar _____ 64

Appointments _____ 68

Humour

Paul the Postdoc _____ 06

One fine day in the lab (13): *Lab monkeys* _____ 37

Cartoon: *Superdoc* (11) _____ 70

Contact _____ 41